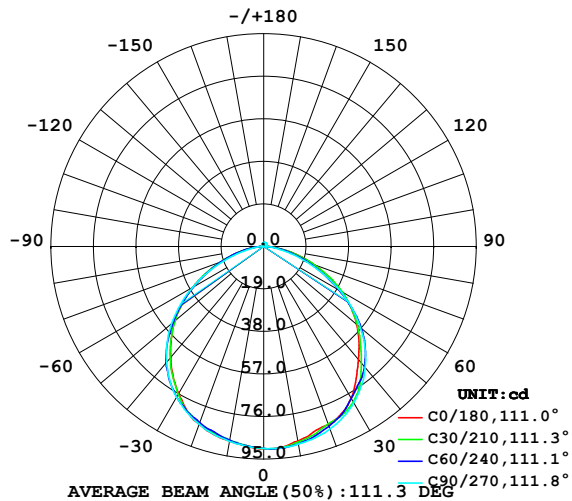


LUMINAIRE PHOTOMETRIC TEST REPORT

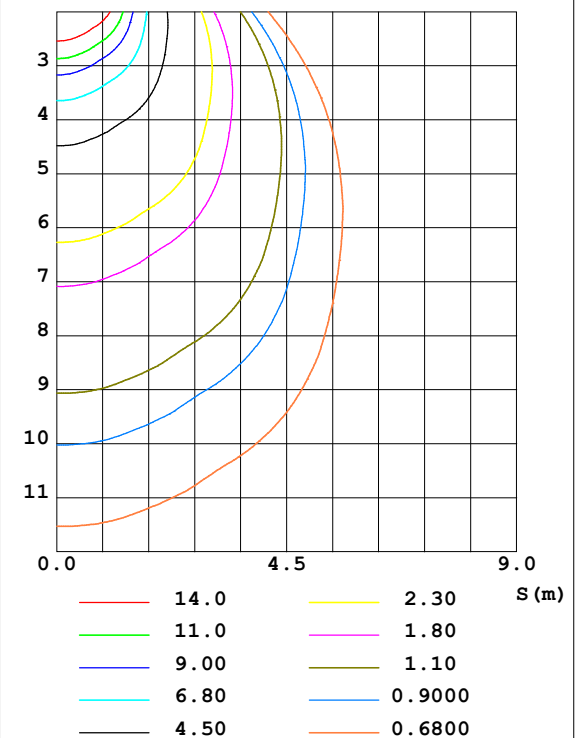
| | | |
|--|---------------|---------------------|
| Test:U:24.00V I:0.1671A P:4.010W PF:1.000 Lamp Flux:261.111x1 lm | | |
| NAME: SP01-24V-5050-60-RGBW-4000K-80-G | TYPE: 硅胶 | WEIGHT: |
| DIM.: 15mm*7mm | SPEC.: | SERIAL No.:20221221 |
| MFR.: OLYMPIA | SUR.:1*0.0015 | PROTECTION ANGLE: |

| DATA OF LAMP | | PHOTOMETRIC DATA Eff: 65.11 lm/W | | | |
|-------------------|---------|----------------------------------|--------|---------------------|-----------|
| MODEL | 5050 | I _{max} (cd) | 90.45 | S/MH (C0/180) | 1.28 |
| NOMINAL POWER (W) | 17 | LOR (%) | 100.0 | S/MH (C90/270) | 1.32 |
| RATED VOLTAGE (V) | 24 | TOTAL FLUX (lm) | 261.11 | η UP, DN (C0-180) | 1.5, 49.6 |
| NOMINAL FLUX (lm) | 261.111 | CIE CLASS | DIRECT | η UP, DN (C180-360) | 1.1, 47.8 |
| LAMPS INSIDE | 1 | η up (%) | 2.6 | CIBSE SHR NOM | 1.25 |
| TEST VOLTAGE (V) | 24.0 | η down (%) | 97.4 | CIBSE SHR MAX | 1.35 |

LUMINOUS INTENSITY DISTRIBUTION DIAGRAM



C0 PLANE ISOLUX DIAGRAM (UNIT:lx)



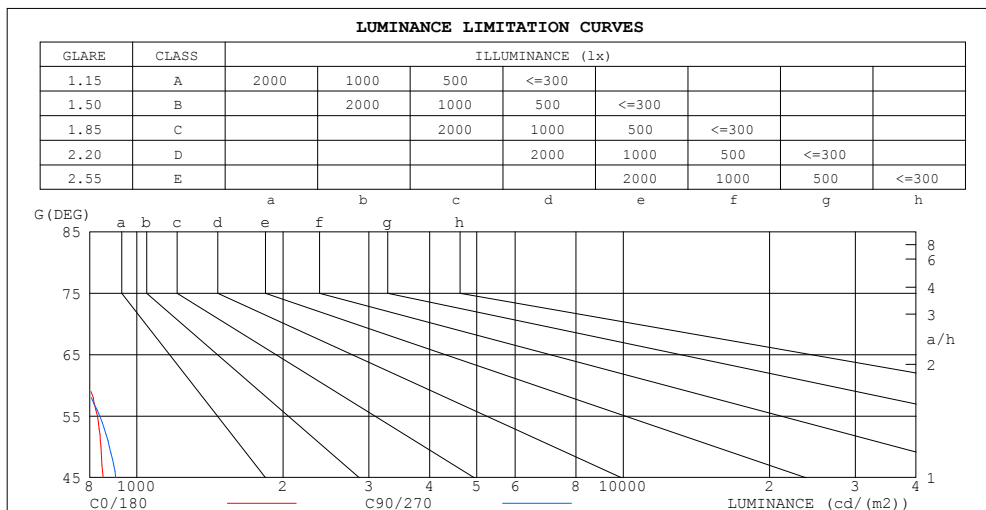
C Range: 0 - 360DEG
C Interval: 30.0DEG
Test Speed: HIGH
Temperature:25.3DEG
Operators:WFW
Test Date:2022-12-14

γ Range: 0 - 180DEG
γ Interval: 1.0DEG
Test System:EVERFINE GO-2000B_V1 SYSTEM V2.0.269
Humidity:65.0%
Test Distance:10.800m [K=1.0000]
Remarks:

ZONAL FLUX DIAGRAM AND LUMINANCE LIMITATION CURVES

ZONAL FLUX DIAGRAM:

| γ | C0 | C45 | C90 | C135 | C180 | C225 | C270 | C315 | γ | Φ zone | Φ total | %lum, lamp |
|----------|-----------------------|--------|--------|--------|--------|--------|--------|--------|----------|-------------|--------------|------------|
| 10 | 88.21 | 89.12 | 89.63 | 88.96 | 88.33 | 87.91 | 88.38 | 88.11 | 0- 10 | 8.533 | 8.533 | 3.27,3.27 |
| 20 | 84.53 | 84.92 | 86.75 | 85.65 | 84.54 | 83.91 | 84.47 | 83.41 | 10- 20 | 24.53 | 33.07 | 12.7,12.7 |
| 30 | 78.20 | 79.19 | 80.54 | 79.30 | 75.86 | 77.01 | 77.83 | 77.46 | 20- 30 | 37.80 | 70.86 | 27.1,27.1 |
| 40 | 65.84 | 68.96 | 70.62 | 68.88 | 64.56 | 66.42 | 67.47 | 67.31 | 30- 40 | 45.84 | 116.7 | 44.7,44.7 |
| 50 | 54.27 | 55.80 | 56.47 | 54.70 | 51.82 | 52.16 | 53.71 | 54.34 | 40- 50 | 47.20 | 163.9 | 62.8,62.8 |
| 60 | 39.83 | 39.57 | 39.27 | 38.51 | 36.60 | 36.38 | 36.71 | 38.73 | 50- 60 | 41.49 | 205.4 | 78.7,78.7 |
| 70 | 24.05 | 23.04 | 20.68 | 21.97 | 20.36 | 20.65 | 18.95 | 22.44 | 60- 70 | 29.50 | 234.9 | 90,90 |
| 80 | 9.613 | 8.869 | 6.572 | 8.437 | 8.091 | 7.790 | 5.832 | 8.715 | 70- 80 | 15.34 | 250.2 | 95.8,95.8 |
| 90 | 1.146 | 0.9941 | 0.9561 | 0.9428 | 0.5461 | 0.6100 | 0.6459 | 0.7277 | 80- 90 | 4.080 | 254.3 | 97.4,97.4 |
| 100 | 0.8727 | 0.9420 | 1.205 | 0.9592 | 0.5542 | 0.5576 | 0.5955 | 0.5715 | 90-100 | 0.8105 | 255.1 | 97.7,97.7 |
| 110 | 0.9902 | 1.077 | 1.198 | 1.098 | 0.7134 | 0.7065 | 0.7132 | 0.6857 | 100-110 | 0.8813 | 256.0 | 98,98 |
| 120 | 1.177 | 1.202 | 1.309 | 1.229 | 0.8729 | 0.8658 | 0.8518 | 0.8518 | 110-120 | 0.9590 | 257.0 | 98.4,98.4 |
| 130 | 1.274 | 1.312 | 1.406 | 1.350 | 1.053 | 1.032 | 0.9902 | 1.008 | 120-130 | 0.9932 | 258.0 | 98.8,98.8 |
| 140 | 1.378 | 1.423 | 1.475 | 1.441 | 1.226 | 1.209 | 1.163 | 1.184 | 130-140 | 0.9662 | 258.9 | 99.2,99.2 |
| 150 | 1.496 | 1.517 | 1.558 | 1.538 | 1.413 | 1.396 | 1.364 | 1.354 | 140-150 | 0.8670 | 259.8 | 99.5,99.5 |
| 160 | 1.621 | 1.617 | 1.662 | 1.635 | 1.572 | 1.551 | 1.510 | 1.527 | 150-160 | 0.7010 | 260.5 | 99.8,99.8 |
| 170 | 1.703 | 1.693 | 1.738 | 1.707 | 1.697 | 1.669 | 1.621 | 1.669 | 160-170 | 0.4623 | 260.9 | 99.9,99.9 |
| 180 | 1.738 | 1.735 | 1.738 | 1.749 | 1.738 | 1.738 | 1.725 | 1.731 | 170-180 | 0.1630 | 261.1 | 100,100 |
| DEG | LUMINOUS INTENSITY:cd | | | | | | | | | UNIT:lm | | |



| LUMINANCE cd/(m2) | | |
|-------------------|--------|---------|
| G (DEG) | C0/180 | C90/270 |
| 85 | 467 | 329 |
| 80 | 554 | 378 |
| 75 | 641 | 482 |
| 70 | 703 | 605 |
| 65 | 750 | 706 |
| 60 | 797 | 785 |
| 55 | 830 | 839 |
| 50 | 844 | 878 |
| 45 | 853 | 905 |

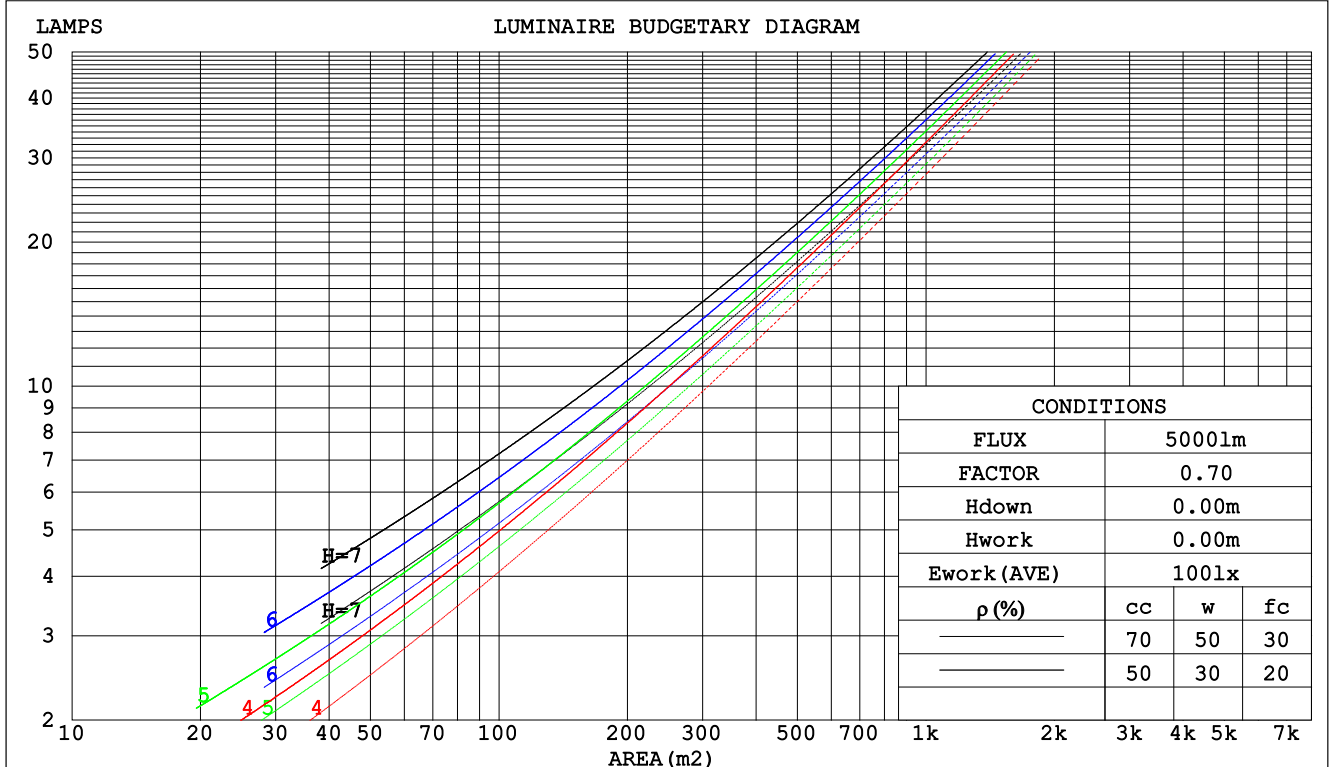
C Range: 0 - 360DEG
C Interval: 30.0DEG
Test Speed: HIGH
Temperature:25.3DEG
Operators:WFW
Test Date:2022-12-14

γ Range: 0 - 180DEG
 γ Interval: 1.0DEG
Test System:EVERFINE GO-2000B_V1 SYSTEM V2.0.269
Humidity:65.0%
Test Distance:10.800m [K=1.0000]
Remarks:

CU AND LUMINAIRE BUDGETARY ESTIMATE DIAGRAM

| | | |
|--|---------------|---------------------|
| Test:U:24.00V I:0.1671A P:4.010W PF:1.000 Lamp Flux:261.111x1 lm | | |
| NAME: SP01-24V-5050-60-RGBW-4000K-80-G | TYPE: 硅胶 | WEIGHT: |
| DIM.: 15mm*7mm | SPEC.: | SERIAL No.:20221221 |
| MFR.: OLYMPIA | SUR.:1*0.0015 | PROTECTION ANGLE: |

| pcc | 80% | | | 70% | | | 50% | | | 30% | | | 10% | | | 0 |
|------|-----------------------|------|------|------|------|------|---------------------------------|------|------|------|------|------|-----|-----|-----|-----|
| pw | 50% | 30% | 10% | 50% | 30% | 10% | 50% | 30% | 10% | 50% | 30% | 10% | 50% | 30% | 10% | 0 |
| pfc | 20% | | | 20% | | | 20% | | | 20% | | | 20% | | | 0 |
| RCR | RCR:Room Cavity Ratio | | | | | | Coefficients of Utilization(CU) | | | | | | | | | |
| 0.0 | 1.18 | 1.18 | 1.18 | 1.15 | 1.15 | 1.15 | 1.10 | 1.10 | 1.10 | 1.04 | 1.04 | 1.04 | .00 | .00 | .00 | .97 |
| 1.0 | 1.04 | .00 | .96 | 1.01 | .98 | .94 | .97 | .93 | .91 | .92 | .90 | .87 | .88 | .86 | .84 | .82 |
| 2.0 | .91 | .84 | .78 | .89 | .82 | .77 | .85 | .79 | .75 | .81 | .77 | .73 | .78 | .74 | .71 | .69 |
| 3.0 | .80 | .72 | .65 | .78 | .71 | .65 | .75 | .68 | .63 | .72 | .66 | .62 | .69 | .64 | .60 | .58 |
| 4.0 | .71 | .62 | .55 | .69 | .61 | .55 | .66 | .59 | .54 | .64 | .58 | .53 | .61 | .56 | .52 | .50 |
| 5.0 | .63 | .54 | .48 | .62 | .54 | .47 | .59 | .52 | .47 | .57 | .51 | .46 | .55 | .50 | .45 | .43 |
| 6.0 | .57 | .48 | .42 | .56 | .47 | .41 | .54 | .46 | .41 | .52 | .45 | .40 | .50 | .44 | .40 | .38 |
| 7.0 | .52 | .43 | .37 | .51 | .42 | .36 | .49 | .41 | .36 | .47 | .41 | .36 | .46 | .40 | .35 | .33 |
| 8.0 | .47 | .39 | .33 | .46 | .38 | .33 | .45 | .37 | .32 | .43 | .37 | .32 | .42 | .36 | .31 | .30 |
| 9.0 | .43 | .35 | .29 | .42 | .35 | .29 | .41 | .34 | .29 | .40 | .33 | .29 | .39 | .33 | .28 | .27 |
| 10.0 | .40 | .32 | .27 | .39 | .32 | .27 | .38 | .31 | .26 | .37 | .30 | .26 | .36 | .30 | .26 | .24 |



C Range: 0 - 360DEG
C Interval: 30.0DEG
Test Speed: HIGH
Temperature:25.3DEG
Operators:WFW
Test Date:2022-12-14

γ Range: 0 - 180DEG
γ Interval: 1.0DEG
Test System:EVERFINE GO-2000B_V1 SYSTEM V2.0.269
Humidity:65.0%
Test Distance:10.800m [K=1.0000]
Remarks:

WEC AND CCEC

| | | | | | |
|--|--|--|---------------|--|---------------------|
| Test:U:24.00V I:0.1671A P:4.010W PF:1.000 Lamp Flux:261.111x1 lm | | | | | |
| NAME: SP01-24V-5050-60-RGBW-4000K-80-G | | | TYPE: 硅胶 | | WEIGHT: |
| DIM.: 15mm*7mm | | | SPEC.: | | SERIAL No.:20221221 |
| MFR.: OLYMPIA | | | SUR.:1*0.0015 | | PROTECTION ANGLE: |

| pcc | 80% | | | 70% | | | 50% | | | 30% | | | 10% | | | 0 |
|------|-----------------------|------|------|------|------|------|---------------------------------|------|------|------|------|------|------|------|------|---|
| pw | 50% | 30% | 10% | 50% | 30% | 10% | 50% | 30% | 10% | 50% | 30% | 10% | 50% | 30% | 10% | 0 |
| pfc | 20% | | | 20% | | | 20% | | | 20% | | | 20% | | | 0 |
| RCR | RCR:Room Cavity Ratio | | | | | | Wall Exitance Coefficients(WEC) | | | | | | | | | |
| 0.0 | | | | | | | | | | | | | | | | |
| 1.0 | .299 | .170 | .054 | .291 | .166 | .053 | .277 | .159 | .051 | .263 | .152 | .049 | .251 | .145 | .047 | |
| 2.0 | .283 | .155 | .048 | .276 | .152 | .047 | .263 | .147 | .046 | .252 | .141 | .044 | .240 | .136 | .043 | |
| 3.0 | .264 | .140 | .042 | .257 | .138 | .041 | .246 | .133 | .040 | .235 | .129 | .040 | .225 | .125 | .039 | |
| 4.0 | .244 | .127 | .037 | .239 | .125 | .037 | .228 | .121 | .036 | .219 | .118 | .035 | .210 | .114 | .035 | |
| 5.0 | .226 | .115 | .033 | .221 | .114 | .033 | .212 | .111 | .033 | .204 | .107 | .032 | .196 | .105 | .031 | |
| 6.0 | .210 | .105 | .030 | .206 | .104 | .030 | .198 | .101 | .029 | .190 | .099 | .029 | .183 | .096 | .029 | |
| 7.0 | .196 | .097 | .027 | .192 | .096 | .027 | .185 | .093 | .027 | .178 | .091 | .027 | .171 | .089 | .026 | |
| 8.0 | .183 | .090 | .025 | .180 | .089 | .025 | .173 | .087 | .025 | .167 | .085 | .024 | .161 | .083 | .024 | |
| 9.0 | .172 | .083 | .023 | .169 | .082 | .023 | .163 | .081 | .023 | .157 | .079 | .023 | .152 | .077 | .022 | |
| 10.0 | .162 | .078 | .022 | .159 | .077 | .021 | .154 | .075 | .021 | .148 | .074 | .021 | .144 | .072 | .021 | |

| pcc | 80% | | | 70% | | | 50% | | | 30% | | | 10% | | | 0 |
|------|-----------------------|------|------|------|------|------|---|------|------|------|------|------|------|------|------|---|
| pw | 50% | 30% | 10% | 50% | 30% | 10% | 50% | 30% | 10% | 50% | 30% | 10% | 50% | 30% | 10% | 0 |
| pfc | 20% | | | 20% | | | 20% | | | 20% | | | 20% | | | 0 |
| RCR | RCR:Room Cavity Ratio | | | | | | Ceiling Cavity Exitance Coefficients (CCEC) | | | | | | | | | |
| 0.0 | .210 | .210 | .210 | .180 | .180 | .180 | .123 | .123 | .123 | .070 | .070 | .070 | .023 | .023 | .023 | |
| 1.0 | .200 | .176 | .155 | .171 | .151 | .134 | .117 | .104 | .092 | .067 | .060 | .054 | .022 | .019 | .017 | |
| 2.0 | .191 | .152 | .119 | .164 | .131 | .103 | .112 | .091 | .072 | .065 | .053 | .042 | .021 | .017 | .014 | |
| 3.0 | .183 | .135 | .095 | .157 | .116 | .083 | .108 | .081 | .058 | .062 | .047 | .034 | .020 | .015 | .011 | |
| 4.0 | .176 | .121 | .079 | .151 | .105 | .069 | .104 | .073 | .049 | .060 | .043 | .029 | .019 | .014 | .009 | |
| 5.0 | .169 | .111 | .068 | .145 | .096 | .059 | .100 | .067 | .042 | .058 | .039 | .025 | .019 | .013 | .008 | |
| 6.0 | .162 | .103 | .060 | .139 | .089 | .052 | .096 | .062 | .037 | .056 | .037 | .022 | .018 | .012 | .007 | |
| 7.0 | .155 | .096 | .054 | .133 | .083 | .047 | .092 | .058 | .033 | .053 | .034 | .020 | .017 | .011 | .007 | |
| 8.0 | .149 | .090 | .050 | .128 | .078 | .043 | .089 | .055 | .031 | .051 | .032 | .018 | .017 | .011 | .006 | |
| 9.0 | .143 | .085 | .046 | .123 | .074 | .040 | .085 | .052 | .029 | .050 | .031 | .017 | .016 | .010 | .006 | |
| 10.0 | .137 | .081 | .043 | .118 | .070 | .038 | .082 | .049 | .027 | .048 | .029 | .016 | .016 | .010 | .005 | |

C Range: 0 - 360DEG
 C Interval: 30.0DEG
 Test Speed: HIGH
 Temperature:25.3DEG
 Operators:WFW
 Test Date:2022-12-14

γ Range: 0 - 180DEG
 γ Interval: 1.0DEG
 Test System:EVERFINE GO-2000B_V1 SYSTEM V2.0.269
 Humidity:65.0%
 Test Distance:10.800m [K=1.0000]
 Remarks:

Uncorrected UGR Table

| | | | | | | | | | | |
|--|------------------|------|------|------|---------------|----------------|------|---------------------|------|------|
| Test:U:24.00V I:0.1671A P:4.010W PF:1.000 Lamp Flux:261.111x1 lm | | | | | | | | | | |
| NAME: SP01-24V-5050-60-RGBW-4000K-80-G | | | | | TYPE: 硅胶 | | | WEIGHT: | | |
| DIM.: 15mm*7mm | | | | | SPEC.: | | | SERIAL No.:20221221 | | |
| MFR.: OLYMPIA | | | | | SUR.:1*0.0015 | | | PROTECTION ANGLE: | | |
| ceiling/cavity | 0.7 | 0.7 | 0.5 | 0.5 | 0.3 | 0.7 | 0.7 | 0.5 | 0.5 | 0.3 |
| walls | 0.5 | 0.3 | 0.5 | 0.3 | 0.3 | 0.5 | 0.3 | 0.5 | 0.3 | 0.3 |
| working plane | 0.2 | 0.2 | 0.2 | 0.2 | 0.2 | 0.2 | 0.2 | 0.2 | 0.2 | 0.2 |
| Room dimensions | Viewed crosswise | | | | | Viewed endwise | | | | |
| x = 2H y = 2H | 12.2 | 13.7 | 12.5 | 13.9 | 14.2 | 12.2 | 13.6 | 12.5 | 13.9 | 14.1 |
| 3H | 13.6 | 15.0 | 14.0 | 15.2 | 15.5 | 13.3 | 14.7 | 13.7 | 14.9 | 15.2 |
| 4H | 14.2 | 15.4 | 14.5 | 15.7 | 16.0 | 13.7 | 15.0 | 14.0 | 15.3 | 15.6 |
| 6H | 14.5 | 15.7 | 14.9 | 16.0 | 16.4 | 13.9 | 15.1 | 14.2 | 15.4 | 15.7 |
| 8H | 14.6 | 15.8 | 15.0 | 16.1 | 16.5 | 13.9 | 15.1 | 14.3 | 15.4 | 15.7 |
| 12H | 14.7 | 15.8 | 15.1 | 16.1 | 16.5 | 13.9 | 15.0 | 14.3 | 15.4 | 15.7 |
| 4H 2H | 12.7 | 14.0 | 13.1 | 14.3 | 14.6 | 12.7 | 14.0 | 13.0 | 14.3 | 14.6 |
| 3H | 14.4 | 15.5 | 14.7 | 15.8 | 16.2 | 14.0 | 15.2 | 14.4 | 15.5 | 15.9 |
| 4H | 15.0 | 16.0 | 15.4 | 16.4 | 16.8 | 14.5 | 15.5 | 14.9 | 15.9 | 16.3 |
| 6H | 15.5 | 16.4 | 15.9 | 16.8 | 17.2 | 14.8 | 15.7 | 15.2 | 16.1 | 16.5 |
| 8H | 15.7 | 16.5 | 16.1 | 16.9 | 17.3 | 14.9 | 15.7 | 15.3 | 16.1 | 16.6 |
| 12H | 15.8 | 16.5 | 16.2 | 16.9 | 17.4 | 14.9 | 15.7 | 15.4 | 16.1 | 16.6 |
| 8H 4H | 15.2 | 16.0 | 15.7 | 16.5 | 16.9 | 14.8 | 15.6 | 15.2 | 16.0 | 16.4 |
| 6H | 15.8 | 16.5 | 16.3 | 17.0 | 17.5 | 15.2 | 15.9 | 15.7 | 16.3 | 16.8 |
| 8H | 16.1 | 16.7 | 16.6 | 17.1 | 17.6 | 15.3 | 15.9 | 15.8 | 16.4 | 16.9 |
| 12H | 16.2 | 16.7 | 16.7 | 17.2 | 17.8 | 15.4 | 15.9 | 15.9 | 16.4 | 17.0 |
| 12H 4H | 15.2 | 16.0 | 15.7 | 16.4 | 16.9 | 14.8 | 15.5 | 15.2 | 16.0 | 16.4 |
| 6H | 15.9 | 16.5 | 16.4 | 16.9 | 17.4 | 15.2 | 15.8 | 15.7 | 16.3 | 16.8 |
| 8H | 16.1 | 16.6 | 16.6 | 17.1 | 17.7 | 15.4 | 15.9 | 15.9 | 16.4 | 17.0 |
| Variations with the observer position at spacings: | | | | | | | | | | |
| S = 1.0H | + 0.2 / - 0.2 | | | | | + 0.2 / - 0.3 | | | | |
| 1.5H | + 0.2 / - 0.4 | | | | | + 0.2 / - 0.4 | | | | |
| 2.0H | + 0.2 / - 0.3 | | | | | + 0.3 / - 0.3 | | | | |

CIE Pub.117 Corrected 261.1 lm Total Lamp Luminous Flux. (8log(F/F0) = -4.7)

C Range: 0 - 360DEG
 C Interval: 30.0DEG
 Test Speed: HIGH
 Temperature:25.3DEG
 Operators:WFW
 Test Date:2022-12-14

γ Range: 0 - 180DEG
 γ Interval: 1.0DEG
 Test System:EVERFINE GO-2000B_V1 SYSTEM V2.0.269
 Humidity:65.0%
 Test Distance:10.800m [K=1.0000]
 Remarks:

UTILIZATION FACTORS TABLE

| | | |
|--|---------------|---------------------|
| Test:U:24.00V I:0.1671A P:4.010W PF:1.000 Lamp Flux:261.111x1 lm | | |
| NAME: SP01-24V-5050-60-RGBW-4000K-80-G | TYPE: 硅胶 | WEIGHT: |
| DIM.: 15mm*7mm | SPEC.: | SERIAL No.:20221221 |
| MFR.: OLYMPIA | SUR.:1*0.0015 | PROTECTION ANGLE: |

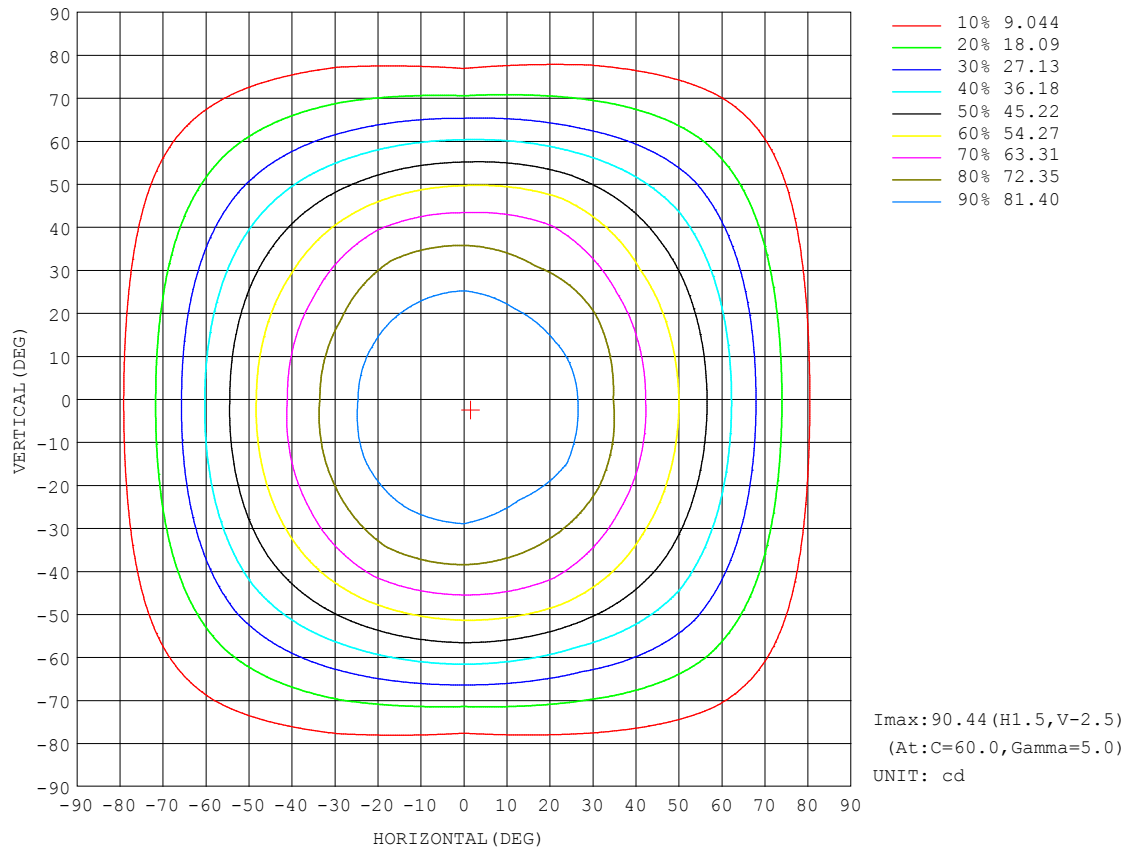
| REFLECTANCE | | | | | | | | | | |
|----------------------------------|--|-----|-----------|-----|-----|-----|-----|--------------|-----|--------|
| Ceiling | 0.8 | 0.8 | 0.8 | 0.7 | 0.7 | 0.7 | 0.5 | 0.5 | 0.5 | 0 |
| Walls | 0.7 | 0.5 | 0.3 | 0.7 | 0.5 | 0.3 | 0.7 | 0.5 | 0.3 | 0 |
| Working plane | 0.2 | 0.2 | 0.2 | 0.2 | 0.2 | 0.2 | 0.2 | 0.2 | 0.2 | 0 |
| ROOM INDEX | UTILIZATION FACTORS (PERCENT) $k(RI) \times RCR = 5$ | | | | | | | | | |
| $k = 0.60$ | 57 | 46 | 39 | 57 | 46 | 39 | 55 | 45 | 39 | 32 |
| 0.80 | 67 | 56 | 49 | 66 | 55 | 48 | 64 | 55 | 48 | 41 |
| 1.00 | 76 | 65 | 58 | 75 | 64 | 57 | 72 | 65 | 57 | 50 |
| 1.25 | 83 | 73 | 66 | 81 | 72 | 65 | 79 | 70 | 64 | 57 |
| 1.50 | 88 | 78 | 71 | 86 | 77 | 71 | 83 | 75 | 70 | 62 |
| 2.00 | 95 | 86 | 80 | 93 | 85 | 79 | 89 | 83 | 77 | 69 |
| 2.50 | 99 | 91 | 85 | 96 | 90 | 84 | 92 | 87 | 82 | 73 |
| 3.00 | 102 | 95 | 90 | 100 | 94 | 89 | 95 | 90 | 86 | 77 |
| 4.00 | 106 | 100 | 96 | 103 | 98 | 94 | 99 | 95 | 91 | 82 |
| 5.00 | 108 | 104 | 100 | 106 | 101 | 98 | 101 | 97 | 94 | 84 |
| ROOM INDEX | UF (total) | | | | | | | | | Direct |
| According to DIN EN 13032-2 2004 | | | Suspended | | | | | SHRNM = 1.25 | | |

C Range: 0 - 360DEG
 C Interval: 30.0DEG
 Test Speed: HIGH
 Temperature: 25.3DEG
 Operators: WFW
 Test Date: 2022-12-14

γ Range: 0 - 180DEG
 γ Interval: 1.0DEG
 Test System: EVERFINE GO-2000B_V1 SYSTEM V2.0.269
 Humidity: 65.0%
 Test Distance: 10.800m [K=1.0000]
 Remarks:

ISOCANDELA DIAGRAM

| | | |
|--|---------------|---------------------|
| Test:U:24.00V I:0.1671A P:4.010W PF:1.000 Lamp Flux:261.111x1 lm | | |
| NAME: SP01-24V-5050-60-RGBW-4000K-80-G | TYPE: 硅胶 | WEIGHT: |
| DIM.: 15mm*7mm | SPEC.: | SERIAL No.:20221221 |
| MFR.: OLYMPIA | SUR.:1*0.0015 | PROTECTION ANGLE: |

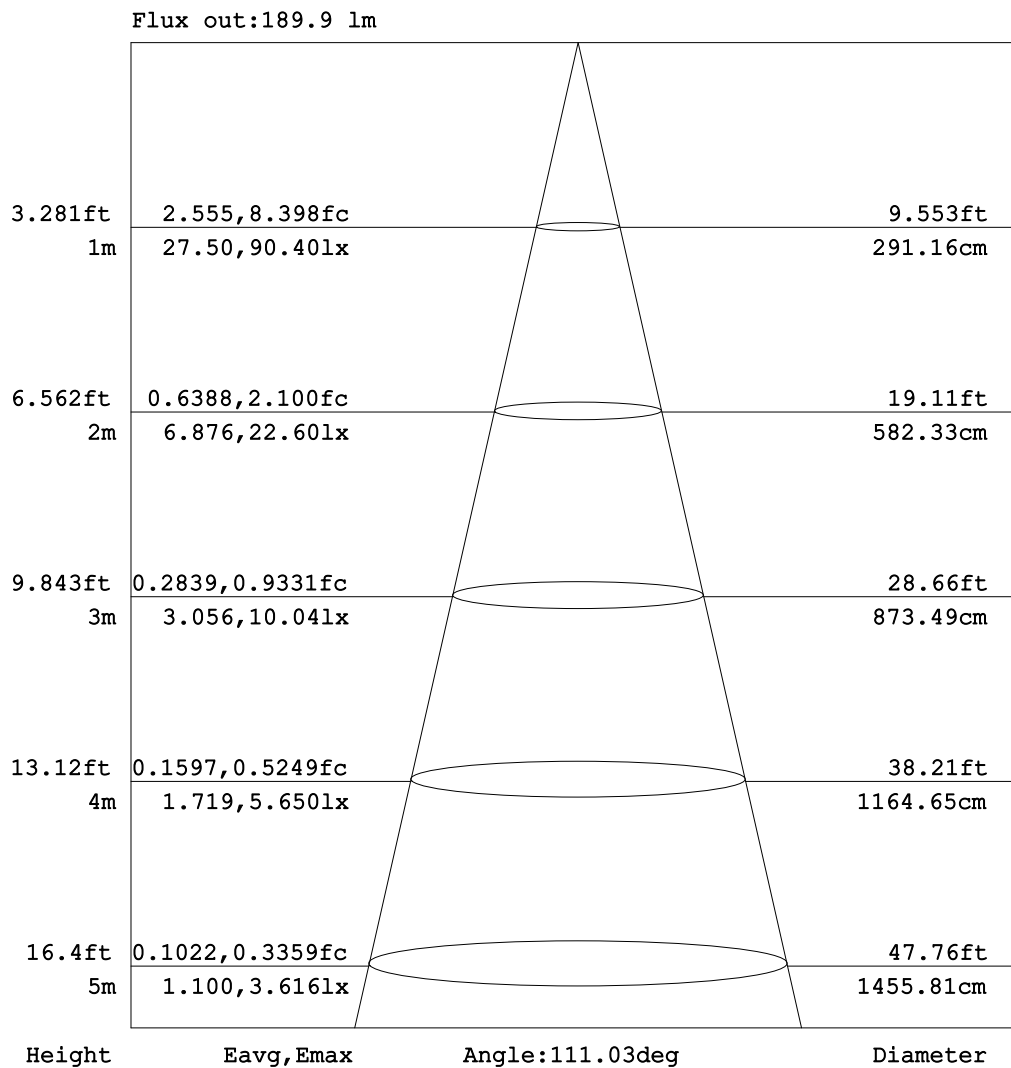


C Range: 0 - 360DEG
C Interval: 30.0DEG
Test Speed: HIGH
Temperature: 25.3DEG
Operators: WFW
Test Date: 2022-12-14

γ Range: 0 - 180DEG
 γ Interval: 1.0DEG
Test System: EVERFINE GO-2000B_V1 SYSTEM V2.0.269
Humidity: 65.0%
Test Distance: 10.800m [K=1.0000]
Remarks:

AAI Figure

| | | |
|--|---------------|---------------------|
| Test:U:24.00V I:0.1671A P:4.010W PF:1.000 Lamp Flux:261.11lx1 lm | | |
| NAME: SP01-24V-5050-60-RGBW-4000K-80-G | TYPE: 硅胶 | WEIGHT: |
| DIM.: 15mm*7mm | SPEC.: | SERIAL No.:20221221 |
| MFR.: OLYMPIA | SUR.:1*0.0015 | PROTECTION ANGLE: |



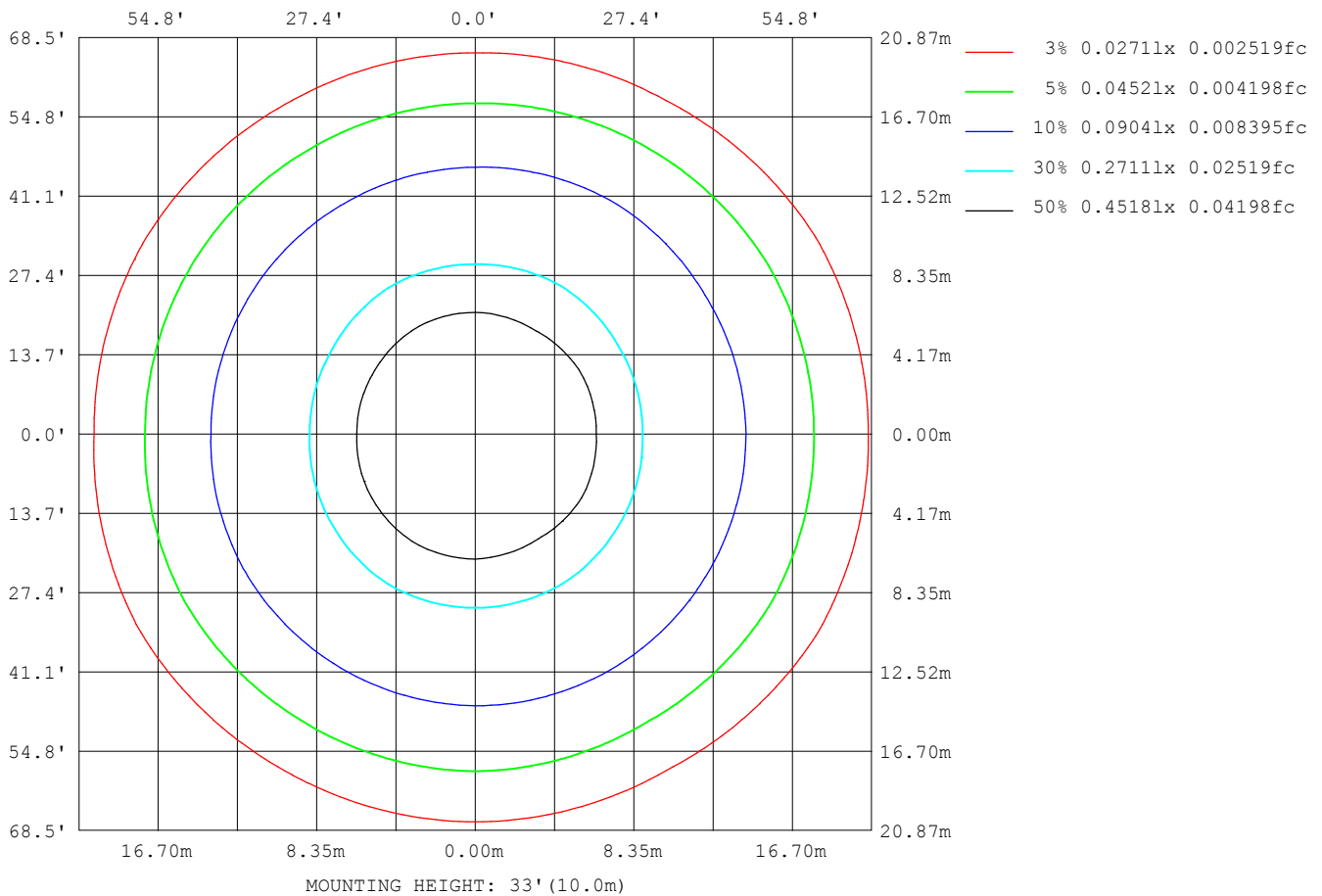
Note: The Curves indicate the illuminated area and the average illumination when the luminaire is at different distance.

C Range: 0 - 360DEG
C Interval: 30.0DEG
Test Speed: HIGH
Temperature: 25.3DEG
Operators: WFW
Test Date: 2022-12-14

γ Range: 0 - 180DEG
γ Interval: 1.0DEG
Test System: EVERFINE GO-2000B_V1 SYSTEM V2.0.269
Humidity: 65.0%
Test Distance: 10.800m [K=1.0000]
Remarks:

ISOLUX DIAGRAM

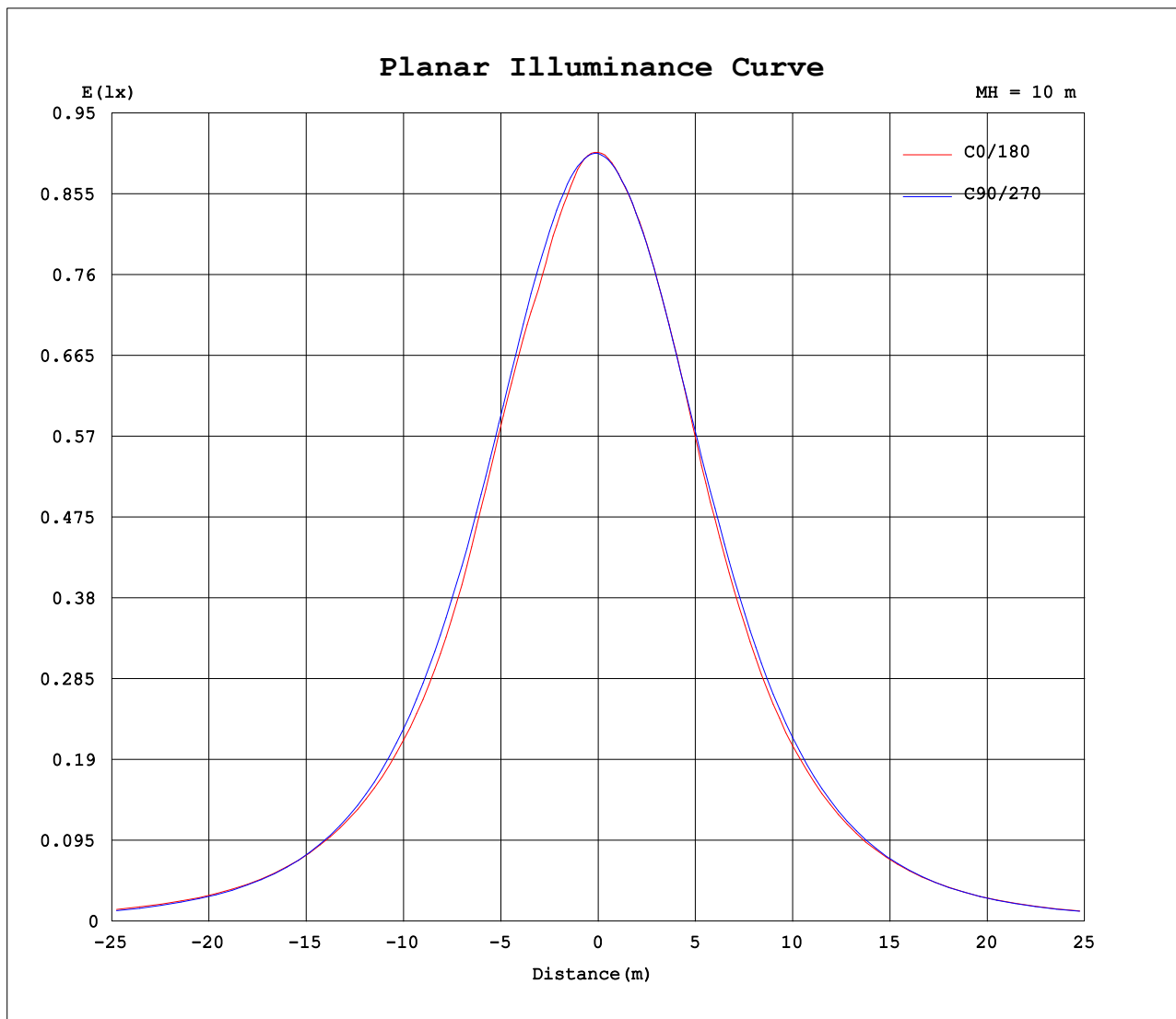
| | | |
|--|---------------|---------------------|
| Test:U:24.00V I:0.1671A P:4.010W PF:1.000 Lamp Flux:261.111x1 lm | | |
| NAME: SP01-24V-5050-60-RGBW-4000K-80-G | TYPE: 硅胶 | WEIGHT: |
| DIM.: 15mm*7mm | SPEC.: | SERIAL No.:20221221 |
| MFR.: OLYMPIA | SUR.:1*0.0015 | PROTECTION ANGLE: |



C Range: 0 - 360DEG
C Interval: 30.0DEG
Test Speed: HIGH
Temperature:25.3DEG
Operators:WFW
Test Date:2022-12-14

γ Range: 0 - 180DEG
 γ Interval: 1.0DEG
Test System:EVERFINE GO-2000B_V1 SYSTEM V2.0.269
Humidity:65.0%
Test Distance:10.800m [K=1.0000]
Remarks:

Planar Illuminance Curve



C Range: 0 - 360DEG
C Interval: 30.0DEG
Test Speed: HIGH
Temperature: 25.3DEG
Operators: WFW
Test Date: 2022-12-14

γ Range: 0 - 180DEG
 γ Interval: 1.0DEG
Test System: EVERFINE GO-2000B_V1 SYSTEM V2.0.269
Humidity: 65.0%
Test Distance: 10.800m [K=1.0000]
Remarks:

LUMINOUS DISTRIBUTION INTENSITY DATA

| | | |
|--|---------------|---------------------|
| Test:U:24.00V I:0.1671A P:4.010W PF:1.000 Lamp Flux:261.111x1 lm | | |
| NAME: SP01-24V-5050-60-RGBW-4000K-80-G | TYPE: 硅胶 | WEIGHT: |
| DIM.: 15mm*7mm | SPEC.: | SERIAL No.:20221221 |
| MFR.: OLYMPIA | SUR.:1*0.0015 | PROTECTION ANGLE: |

Table--1

UNIT: cd

| C (DEG) γ (DEG) | 0 | 30 | 60 | 90 | 120 | 150 | 180 | 210 | 240 | 270 | 300 | 330 | | | | | | |
|--------------------|------|------|------|------|------|------|------|------|------|------|------|------|--|--|--|--|--|--|
| 0 | 90.4 | 90.3 | 90.2 | 90.3 | 90.2 | 90.2 | 90.4 | 90.3 | 90.2 | 90.3 | 90.2 | 90.2 | | | | | | |
| 5 | 90.1 | 90.2 | 90.5 | 90.2 | 90.1 | 89.8 | 89.6 | 89.3 | 89.3 | 89.5 | 89.6 | 89.8 | | | | | | |
| 10 | 88.2 | 88.7 | 89.5 | 89.6 | 89.3 | 88.6 | 88.3 | 87.9 | 87.9 | 88.4 | 88.4 | 87.9 | | | | | | |
| 15 | 85.9 | 87.0 | 87.8 | 88.5 | 87.7 | 87.4 | 86.9 | 86.2 | 85.8 | 86.8 | 86.2 | 85.9 | | | | | | |
| 20 | 84.5 | 84.3 | 85.5 | 86.7 | 85.7 | 85.6 | 84.5 | 84.2 | 83.7 | 84.5 | 83.7 | 83.1 | | | | | | |
| 25 | 82.4 | 82.9 | 82.6 | 84.1 | 83.4 | 82.7 | 81.0 | 81.2 | 81.3 | 81.5 | 80.7 | 81.4 | | | | | | |
| 30 | 78.2 | 80.1 | 78.3 | 80.5 | 80.0 | 78.6 | 75.9 | 76.3 | 77.7 | 77.8 | 76.5 | 78.4 | | | | | | |
| 35 | 72.0 | 75.0 | 74.4 | 76.0 | 75.6 | 72.9 | 70.7 | 71.0 | 73.3 | 73.2 | 72.1 | 73.4 | | | | | | |
| 40 | 65.8 | 67.9 | 70.0 | 70.6 | 70.6 | 67.2 | 64.6 | 65.1 | 67.8 | 67.5 | 68.1 | 66.5 | | | | | | |
| 45 | 60.3 | 61.1 | 64.2 | 64.0 | 63.8 | 60.5 | 58.4 | 58.4 | 60.8 | 61.1 | 62.5 | 59.6 | | | | | | |
| 50 | 54.3 | 54.6 | 57.0 | 56.5 | 55.7 | 53.7 | 51.8 | 51.5 | 52.8 | 53.7 | 55.5 | 53.2 | | | | | | |
| 55 | 47.6 | 47.7 | 48.3 | 48.1 | 47.1 | 46.3 | 44.5 | 44.4 | 44.7 | 45.4 | 47.1 | 46.5 | | | | | | |
| 60 | 39.8 | 40.5 | 38.6 | 39.3 | 38.5 | 38.5 | 36.6 | 36.5 | 36.3 | 36.7 | 38.0 | 39.5 | | | | | | |
| 65 | 31.7 | 32.6 | 29.6 | 29.8 | 29.7 | 30.5 | 28.2 | 28.8 | 27.9 | 27.6 | 29.0 | 31.6 | | | | | | |
| 70 | 24.0 | 24.3 | 21.8 | 20.7 | 21.6 | 22.3 | 20.4 | 20.9 | 20.4 | 18.9 | 21.2 | 23.6 | | | | | | |
| 75 | 16.6 | 16.4 | 14.5 | 12.5 | 14.5 | 14.8 | 13.9 | 13.8 | 13.6 | 11.3 | 14.4 | 16.1 | | | | | | |
| 80 | 9.61 | 9.58 | 8.16 | 6.57 | 8.30 | 8.57 | 8.09 | 7.80 | 7.78 | 5.83 | 8.22 | 9.21 | | | | | | |
| 85 | 4.07 | 3.94 | 3.24 | 2.87 | 3.54 | 3.70 | 3.29 | 3.19 | 3.22 | 2.46 | 3.37 | 3.81 | | | | | | |
| 90 | 1.15 | 1.03 | 0.96 | 0.96 | 0.95 | 0.93 | 0.55 | 0.63 | 0.59 | 0.65 | 0.66 | 0.79 | | | | | | |
| 95 | 0.87 | 0.89 | 0.90 | 1.10 | 0.90 | 0.90 | 0.47 | 0.48 | 0.55 | 0.57 | 0.57 | 0.53 | | | | | | |
| 100 | 0.87 | 0.94 | 0.94 | 1.21 | 0.96 | 0.55 | 0.50 | 0.62 | 0.60 | 0.62 | 0.62 | 0.53 | | | | | | |
| 105 | 0.96 | 1.00 | 1.00 | 1.17 | 1.07 | 1.03 | 0.63 | 0.60 | 0.69 | 0.62 | 0.69 | 0.59 | | | | | | |
| 110 | 0.99 | 1.07 | 1.08 | 1.20 | 1.09 | 1.11 | 0.71 | 0.65 | 0.76 | 0.71 | 0.75 | 0.62 | | | | | | |
| 115 | 1.07 | 1.15 | 1.14 | 1.25 | 1.16 | 1.18 | 0.79 | 0.73 | 0.83 | 0.75 | 0.82 | 0.71 | | | | | | |
| 120 | 1.18 | 1.21 | 1.19 | 1.31 | 1.21 | 1.25 | 0.87 | 0.82 | 0.91 | 0.85 | 0.90 | 0.80 | | | | | | |
| 125 | 1.19 | 1.27 | 1.27 | 1.35 | 1.27 | 1.30 | 0.96 | 0.93 | 1.00 | 0.91 | 0.98 | 0.87 | | | | | | |
| 130 | 1.27 | 1.34 | 1.29 | 1.41 | 1.34 | 1.36 | 1.05 | 0.99 | 1.07 | 0.99 | 1.06 | 0.96 | | | | | | |
| 135 | 1.32 | 1.39 | 1.36 | 1.45 | 1.41 | 1.42 | 1.15 | 1.09 | 1.16 | 1.07 | 1.14 | 1.07 | | | | | | |
| 140 | 1.38 | 1.45 | 1.40 | 1.48 | 1.41 | 1.47 | 1.23 | 1.17 | 1.25 | 1.16 | 1.23 | 1.14 | | | | | | |
| 145 | 1.43 | 1.50 | 1.43 | 1.52 | 1.48 | 1.52 | 1.33 | 1.27 | 1.34 | 1.28 | 1.32 | 1.21 | | | | | | |
| 150 | 1.50 | 1.53 | 1.50 | 1.56 | 1.50 | 1.57 | 1.41 | 1.36 | 1.43 | 1.36 | 1.40 | 1.31 | | | | | | |
| 155 | 1.54 | 1.61 | 1.53 | 1.61 | 1.55 | 1.63 | 1.49 | 1.43 | 1.52 | 1.43 | 1.48 | 1.39 | | | | | | |
| 160 | 1.62 | 1.65 | 1.59 | 1.66 | 1.60 | 1.67 | 1.57 | 1.51 | 1.59 | 1.51 | 1.57 | 1.49 | | | | | | |
| 165 | 1.63 | 1.69 | 1.61 | 1.70 | 1.63 | 1.70 | 1.64 | 1.58 | 1.66 | 1.59 | 1.63 | 1.54 | | | | | | |
| 170 | 1.70 | 1.73 | 1.66 | 1.74 | 1.68 | 1.74 | 1.70 | 1.62 | 1.72 | 1.62 | 1.70 | 1.64 | | | | | | |
| 175 | 1.73 | 1.75 | 1.70 | 1.74 | 1.72 | 1.75 | 1.75 | 1.68 | 1.74 | 1.68 | 1.75 | 1.65 | | | | | | |
| 180 | 1.74 | 1.75 | 1.72 | 1.74 | 1.75 | 1.75 | 1.74 | 1.74 | 1.74 | 1.72 | 1.74 | 1.72 | | | | | | |

C Range: 0 - 360DEG
C Interval: 30.0DEG
Test Speed: HIGH
Temperature:25.3DEG
Operators:WFW
Test Date:2022-12-14

γ Range: 0 - 180DEG
γ Interval: 1.0DEG
Test System:EVERFINE GO-2000B_V1 SYSTEM V2.0.269
Humidity:65.0%
Test Distance:10.800m [K=1.0000]
Remarks:

Photometric Data Table [cd]

| G/C | 0.0 | 30.0 | 60.0 | 90.0 | 120.0 | 150.0 | 180.0 | 210.0 | 240.0 | 270.0 |
|-------|--------|--------|--------|--------|--------|--------|--------|--------|--------|--------|
| 0.0 | 90.37 | 90.27 | 90.23 | 90.26 | 90.20 | 90.20 | 90.37 | 90.27 | 90.23 | 90.26 |
| 3.0 | 90.36 | 90.44 | 90.44 | 90.31 | 90.20 | 89.97 | 90.02 | 89.81 | 89.79 | 89.88 |
| 6.0 | 89.82 | 90.00 | 90.38 | 90.21 | 89.95 | 89.58 | 89.32 | 89.01 | 89.16 | 89.28 |
| 9.0 | 88.52 | 89.08 | 89.78 | 89.91 | 89.46 | 88.92 | 88.57 | 88.17 | 88.29 | 88.65 |
| 12.0 | 87.39 | 88.09 | 88.90 | 89.30 | 88.78 | 88.05 | 87.88 | 87.08 | 87.20 | 87.69 |
| 15.0 | 85.91 | 87.00 | 87.83 | 88.46 | 87.68 | 87.41 | 86.92 | 86.24 | 85.78 | 86.81 |
| 18.0 | 84.83 | 85.18 | 86.33 | 87.60 | 86.66 | 86.31 | 85.53 | 85.08 | 84.74 | 85.60 |
| 21.0 | 84.23 | 84.06 | 84.86 | 86.29 | 85.25 | 84.97 | 83.96 | 83.46 | 83.05 | 83.89 |
| 24.0 | 82.96 | 83.49 | 83.25 | 84.75 | 84.01 | 83.29 | 82.00 | 81.61 | 81.77 | 82.19 |
| 27.0 | 80.98 | 82.03 | 80.99 | 82.80 | 82.37 | 81.23 | 79.03 | 79.41 | 79.68 | 80.10 |
| 30.0 | 78.20 | 80.06 | 78.31 | 80.54 | 80.04 | 78.56 | 75.86 | 76.30 | 77.71 | 77.83 |
| 33.0 | 74.66 | 77.39 | 75.88 | 77.91 | 77.60 | 75.10 | 72.87 | 72.97 | 75.18 | 75.20 |
| 36.0 | 70.79 | 73.62 | 73.65 | 75.11 | 74.60 | 71.86 | 69.49 | 69.92 | 72.27 | 72.09 |
| 39.0 | 67.02 | 69.31 | 71.21 | 71.73 | 71.55 | 68.54 | 65.89 | 66.24 | 69.08 | 68.70 |
| 42.0 | 63.58 | 65.24 | 67.80 | 68.18 | 68.03 | 64.62 | 62.23 | 62.50 | 65.30 | 65.03 |
| 45.0 | 60.31 | 61.11 | 64.23 | 64.02 | 63.84 | 60.53 | 58.41 | 58.44 | 60.81 | 61.10 |
| 48.0 | 56.66 | 57.24 | 60.05 | 59.62 | 58.93 | 56.53 | 54.70 | 54.42 | 56.06 | 56.74 |
| 51.0 | 52.98 | 53.28 | 55.36 | 54.93 | 53.95 | 52.41 | 50.46 | 50.20 | 51.11 | 52.10 |
| 54.0 | 49.01 | 49.09 | 50.07 | 49.92 | 48.90 | 47.79 | 45.87 | 46.05 | 46.32 | 47.15 |
| 57.0 | 44.52 | 44.95 | 44.34 | 44.50 | 43.75 | 43.26 | 41.50 | 41.30 | 41.36 | 42.07 |
| 60.0 | 39.83 | 40.50 | 38.63 | 39.27 | 38.54 | 38.49 | 36.60 | 36.51 | 36.25 | 36.71 |
| 63.0 | 34.82 | 35.72 | 33.15 | 33.53 | 33.11 | 33.66 | 31.42 | 31.90 | 31.17 | 31.47 |
| 66.0 | 30.07 | 30.95 | 27.95 | 27.96 | 28.11 | 28.82 | 26.58 | 27.08 | 26.38 | 25.92 |
| 69.0 | 25.59 | 25.97 | 23.29 | 22.44 | 23.27 | 23.92 | 21.74 | 22.33 | 21.89 | 20.63 |
| 72.0 | 21.07 | 21.05 | 18.80 | 17.10 | 18.72 | 19.10 | 17.69 | 17.99 | 17.56 | 15.82 |
| 75.0 | 16.60 | 16.42 | 14.49 | 12.47 | 14.46 | 14.81 | 13.88 | 13.80 | 13.62 | 11.25 |
| 78.0 | 12.29 | 12.16 | 10.52 | 8.641 | 10.64 | 10.93 | 10.33 | 10.05 | 9.961 | 7.815 |
| 81.0 | 8.366 | 8.328 | 7.035 | 5.700 | 7.207 | 7.436 | 7.052 | 6.823 | 6.755 | 5.041 |
| 84.0 | 5.034 | 4.846 | 4.077 | 3.464 | 4.340 | 4.535 | 4.145 | 3.928 | 4.000 | 3.005 |
| 87.0 | 2.433 | 2.343 | 1.912 | 1.887 | 2.182 | 2.226 | 1.816 | 1.772 | 1.906 | 1.652 |
| 90.0 | 1.146 | 1.031 | 0.9574 | 0.9561 | 0.9514 | 0.9342 | 0.5461 | 0.6319 | 0.5880 | 0.6459 |
| 93.0 | 0.8937 | 0.8797 | 0.9004 | 1.011 | 0.9004 | 0.8659 | 0.4435 | 0.4848 | 0.5335 | 0.5958 |
| 96.0 | 0.8727 | 0.8936 | 0.9004 | 1.129 | 0.9004 | 0.9074 | 0.4850 | 0.4848 | 0.5819 | 0.5679 |
| 99.0 | 0.8727 | 0.9282 | 0.9417 | 1.184 | 0.9350 | 0.9421 | 0.5404 | 0.4987 | 0.6095 | 0.5817 |
| 102.0 | 0.8727 | 0.9629 | 0.9694 | 1.198 | 0.9902 | 0.9905 | 0.5819 | 0.5263 | 0.6512 | 0.6163 |
| 105.0 | 0.9556 | 0.9975 | 1.004 | 1.170 | 1.066 | 1.032 | 0.6304 | 0.5954 | 0.6927 | 0.6233 |
| 108.0 | 0.9558 | 1.053 | 1.053 | 1.178 | 1.073 | 1.087 | 0.6790 | 0.6163 | 0.7342 | 0.6648 |
| 111.0 | 0.9972 | 1.088 | 1.087 | 1.205 | 1.108 | 1.122 | 0.7205 | 0.6716 | 0.7827 | 0.7134 |
| 114.0 | 1.060 | 1.129 | 1.129 | 1.233 | 1.157 | 1.164 | 0.7759 | 0.7134 | 0.8174 | 0.7478 |
| 117.0 | 1.087 | 1.171 | 1.157 | 1.268 | 1.184 | 1.198 | 0.8244 | 0.7686 | 0.8658 | 0.7893 |
| 120.0 | 1.177 | 1.212 | 1.191 | 1.309 | 1.212 | 1.247 | 0.8729 | 0.8241 | 0.9075 | 0.8518 |
| 123.0 | 1.170 | 1.247 | 1.233 | 1.337 | 1.274 | 1.281 | 0.9351 | 0.8656 | 0.9560 | 0.8725 |
| 126.0 | 1.205 | 1.281 | 1.281 | 1.364 | 1.281 | 1.323 | 0.9769 | 0.9419 | 1.004 | 0.9280 |
| 129.0 | 1.267 | 1.323 | 1.288 | 1.385 | 1.316 | 1.351 | 1.032 | 0.9695 | 1.053 | 0.9695 |
| 132.0 | 1.281 | 1.358 | 1.309 | 1.420 | 1.412 | 1.385 | 1.088 | 1.046 | 1.108 | 1.052 |
| 135.0 | 1.316 | 1.392 | 1.364 | 1.448 | 1.413 | 1.420 | 1.150 | 1.087 | 1.157 | 1.073 |
| 138.0 | 1.350 | 1.420 | 1.399 | 1.468 | 1.413 | 1.441 | 1.198 | 1.156 | 1.212 | 1.149 |
| 141.0 | 1.385 | 1.454 | 1.399 | 1.489 | 1.420 | 1.482 | 1.247 | 1.184 | 1.268 | 1.184 |
| 144.0 | 1.413 | 1.482 | 1.413 | 1.510 | 1.447 | 1.517 | 1.302 | 1.274 | 1.330 | 1.246 |
| 147.0 | 1.468 | 1.510 | 1.461 | 1.531 | 1.496 | 1.551 | 1.364 | 1.288 | 1.378 | 1.295 |
| 150.0 | 1.496 | 1.531 | 1.503 | 1.558 | 1.503 | 1.572 | 1.413 | 1.357 | 1.434 | 1.364 |
| 153.0 | 1.510 | 1.579 | 1.503 | 1.600 | 1.537 | 1.600 | 1.462 | 1.392 | 1.475 | 1.392 |
| 156.0 | 1.551 | 1.614 | 1.537 | 1.628 | 1.558 | 1.641 | 1.510 | 1.447 | 1.538 | 1.440 |
| 159.0 | 1.620 | 1.641 | 1.572 | 1.648 | 1.600 | 1.662 | 1.552 | 1.503 | 1.579 | 1.503 |
| 162.0 | 1.621 | 1.676 | 1.607 | 1.676 | 1.607 | 1.690 | 1.607 | 1.530 | 1.621 | 1.537 |
| 165.0 | 1.627 | 1.690 | 1.614 | 1.704 | 1.628 | 1.697 | 1.642 | 1.579 | 1.655 | 1.593 |
| 168.0 | 1.655 | 1.697 | 1.648 | 1.718 | 1.655 | 1.725 | 1.690 | 1.607 | 1.683 | 1.614 |
| 171.0 | 1.704 | 1.732 | 1.662 | 1.738 | 1.683 | 1.739 | 1.711 | 1.628 | 1.718 | 1.641 |
| 174.0 | 1.731 | 1.745 | 1.690 | 1.738 | 1.711 | 1.752 | 1.732 | 1.655 | 1.738 | 1.662 |
| 177.0 | 1.731 | 1.745 | 1.724 | 1.738 | 1.738 | 1.752 | 1.745 | 1.711 | 1.738 | 1.724 |
| 180.0 | 1.738 | 1.745 | 1.725 | 1.738 | 1.745 | 1.752 | 1.738 | 1.738 | 1.738 | 1.725 |
| G/C | 300.0 | 330.0 | | | | | | | | |
| 0.0 | 90.20 | 90.20 | | | | | | | | |
| 3.0 | 90.01 | 90.08 | | | | | | | | |
| 6.0 | 89.43 | 89.35 | | | | | | | | |
| 9.0 | 88.70 | 88.22 | | | | | | | | |
| 12.0 | 87.59 | 87.16 | | | | | | | | |
| 15.0 | 86.15 | 85.86 | | | | | | | | |
| 18.0 | 84.71 | 84.15 | | | | | | | | |
| 21.0 | 83.19 | 82.84 | | | | | | | | |
| 24.0 | 81.38 | 81.78 | | | | | | | | |
| 27.0 | 79.21 | 80.52 | | | | | | | | |
| 30.0 | 76.51 | 78.41 | | | | | | | | |

C Range: 0 - 360DEG
 C Interval: 30.0DEG
 Test Speed: HIGH
 Temperature: 25.3DEG
 Operators: WFW
 Test Date: 2022-12-14

γ Range: 0 - 180DEG
 γ Interval: 1.0DEG
 Test System: EVERFINE GO-2000B_V1 SYSTEM V2.0.269
 Humidity: 65.0%
 Test Distance: 10.800m [K=1.0000]
 Remarks:

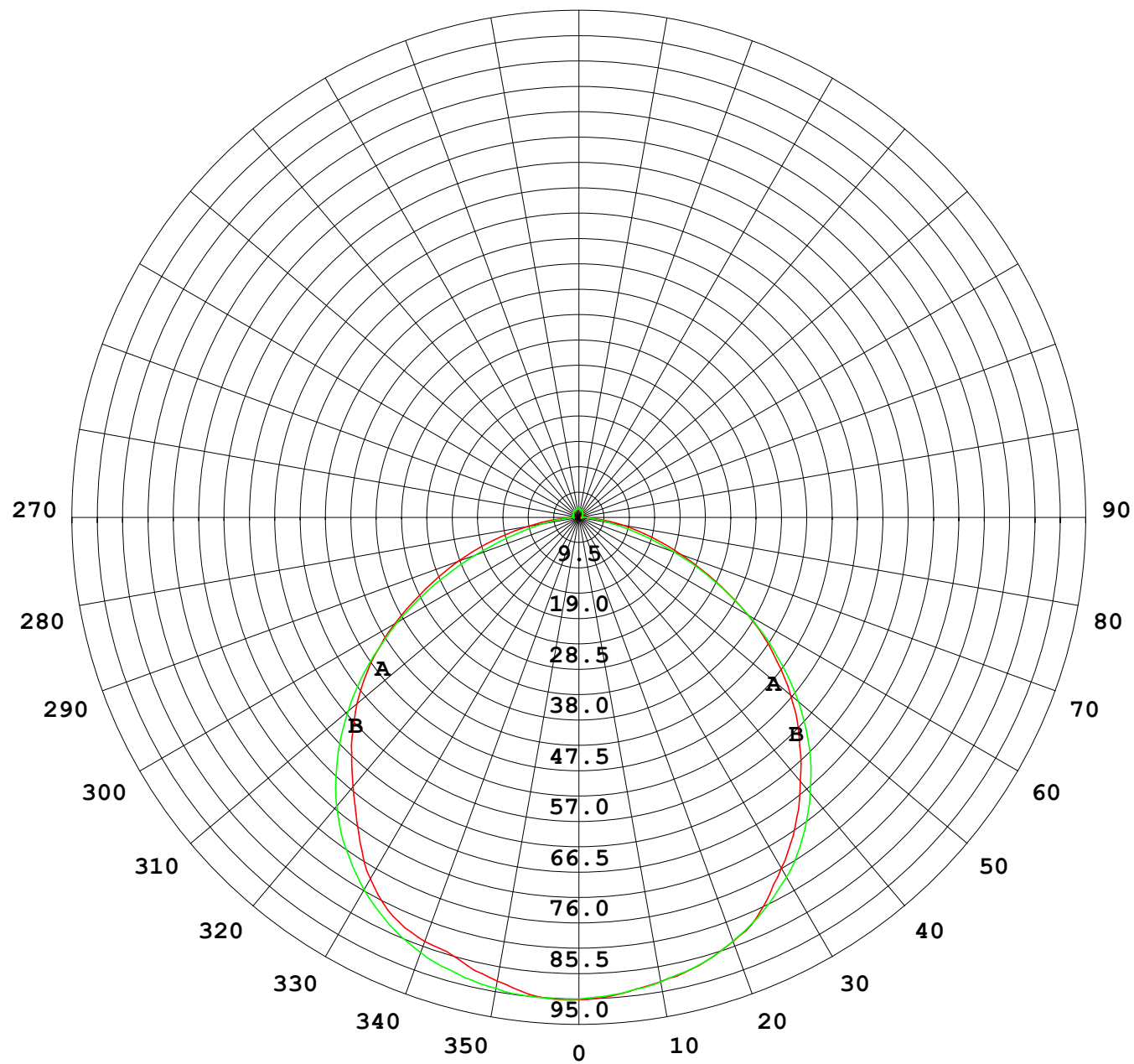
Photometric Data Table [cd]

| | | |
|-------|--------|--------|
| 33.0 | 73.88 | 75.59 |
| 36.0 | 71.49 | 72.22 |
| 39.0 | 69.11 | 67.92 |
| 42.0 | 66.01 | 63.81 |
| 45.0 | 62.53 | 59.58 |
| 48.0 | 58.34 | 55.91 |
| 51.0 | 53.83 | 51.87 |
| 54.0 | 48.81 | 47.88 |
| 57.0 | 43.56 | 43.79 |
| 60.0 | 37.99 | 39.47 |
| 63.0 | 32.34 | 34.99 |
| 66.0 | 27.35 | 30.02 |
| 69.0 | 22.74 | 25.24 |
| 72.0 | 18.39 | 20.67 |
| 75.0 | 14.35 | 16.07 |
| 78.0 | 10.55 | 11.89 |
| 81.0 | 7.128 | 8.091 |
| 84.0 | 4.208 | 4.719 |
| 87.0 | 1.961 | 2.127 |
| 90.0 | 0.6637 | 0.7917 |
| 93.0 | 0.5610 | 0.5335 |
| 96.0 | 0.5749 | 0.5264 |
| 99.0 | 0.6095 | 0.5264 |
| 102.0 | 0.6512 | 0.5264 |
| 105.0 | 0.6927 | 0.5883 |
| 108.0 | 0.7342 | 0.6095 |
| 111.0 | 0.7758 | 0.6439 |
| 114.0 | 0.8036 | 0.7131 |
| 117.0 | 0.8452 | 0.7340 |
| 120.0 | 0.9005 | 0.8031 |
| 123.0 | 0.9421 | 0.8380 |
| 126.0 | 0.9975 | 0.8863 |
| 129.0 | 1.032 | 0.9488 |
| 132.0 | 1.094 | 0.9902 |
| 135.0 | 1.136 | 1.066 |
| 138.0 | 1.185 | 1.094 |
| 141.0 | 1.247 | 1.156 |
| 144.0 | 1.295 | 1.191 |
| 147.0 | 1.351 | 1.274 |
| 150.0 | 1.399 | 1.309 |
| 153.0 | 1.461 | 1.385 |
| 156.0 | 1.503 | 1.399 |
| 159.0 | 1.552 | 1.468 |
| 162.0 | 1.600 | 1.510 |
| 165.0 | 1.635 | 1.544 |
| 168.0 | 1.676 | 1.634 |
| 171.0 | 1.697 | 1.641 |
| 174.0 | 1.738 | 1.641 |
| 177.0 | 1.738 | 1.683 |
| 180.0 | 1.738 | 1.725 |

C Range: 0 - 360DEG
C Interval: 30.0DEG
Test Speed: HIGH
Temperature:25.3DEG
Operators:WFW
Test Date:2022-12-14

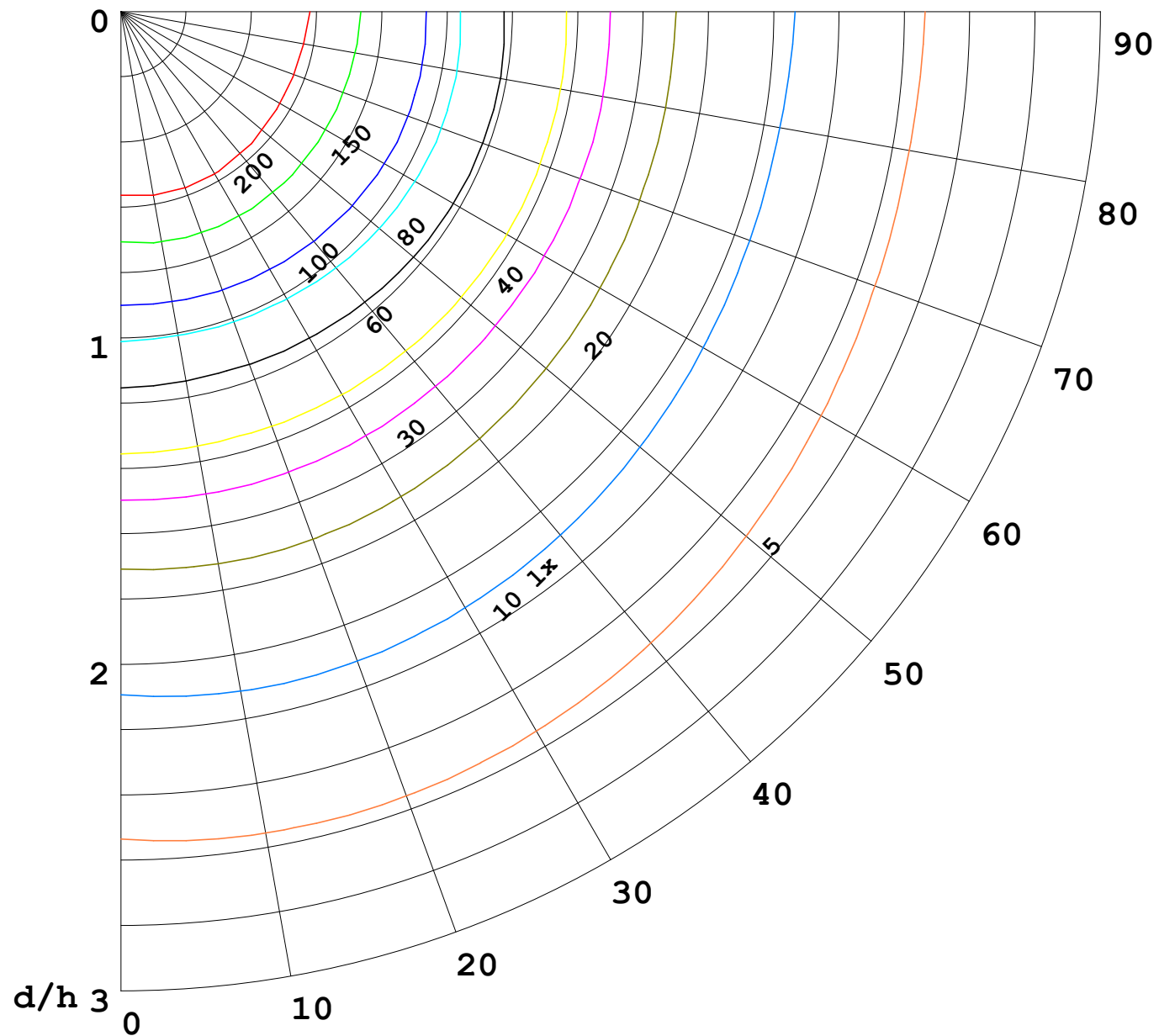
γ Range: 0 - 180DEG
γ Interval: 1.0DEG
Test System:EVERFINE GO-2000B_V1 SYSTEM V2.0.269
Humidity:65.0%
Test Distance:10.800m [K=1.0000]
Remarks:

I (cd)



1000 lm

$\kappa = 1$



F = 5000 lm
 K = 0.7
 Hcc = 0.0 m
 Hfc = 0.0 m
 Eave = 100 lx

| | Pcc | Pw | Pfc |
|---|-----|----|-----|
| — | 70 | 50 | 30 |
| — | 50 | 30 | 20 |

